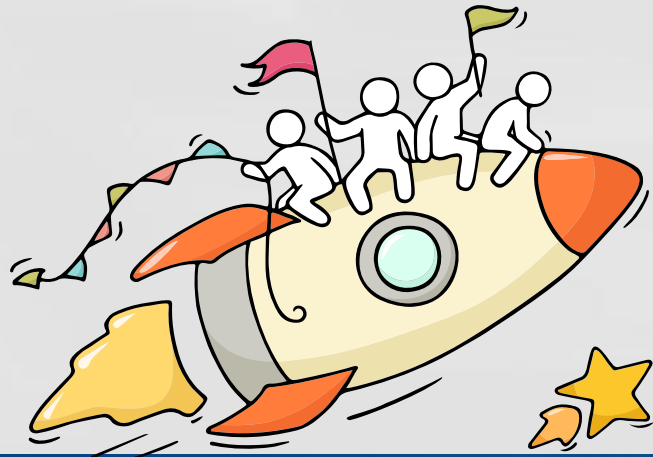


2022 GCE O-Level Results Administrative Briefing



Montfortians,

As we gather here today, let us all celebrate our efforts!



Finally, we are going to get our results!



Think about your opportunities

You may be:

- You are happy that your results meet your expectations;
- You are overjoyed that your results exceed your expectations, or;
- You are worried/upset because your results fall short of your expectations.



As there are **many pathways and opportunities**, remember that **everyone's learning journey is different** and **we can each have a fulfilling outcome!**



No matter the circumstances, there is always a way forward.

Stop

- Calm yourself down. Take a few deep breaths.

Think

- Think through the different options that are available for you. Keep things in perspective.
- Remember that the N-Level is one part of your life journey and not the destination.

Do

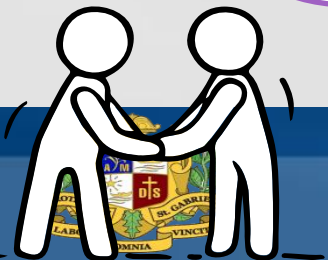
- Approach a trusted adult and seek his/her help. Have a conversation with this person about what would be best for you.
- Make a decision and take action based on your options.

When you receive your results, you may experience a range of emotions.

Managing these emotions well will allow you to stay calm and make rational decisions.

Keep a lookout for some of these signs in your peers or yourself.

How can we support one another?



D

Deliberately avoiding others

I

Increased irritability, restlessness, agitation, stress and anxiety

S

Sending or posting moody messages on social media

T

Talking about death or dying

R

Reacting differently or gradually losing interest in things they used to like

E

Eating more than usual or having a much reduced appetite

S

Sleep pattern changes with difficulty falling asleep or oversleeping

S

Slowing down of energy levels



Ministry of Education
Singapore

If you notice any of these signs in yourself or your friends,
have a chat with your school counsellor or teacher

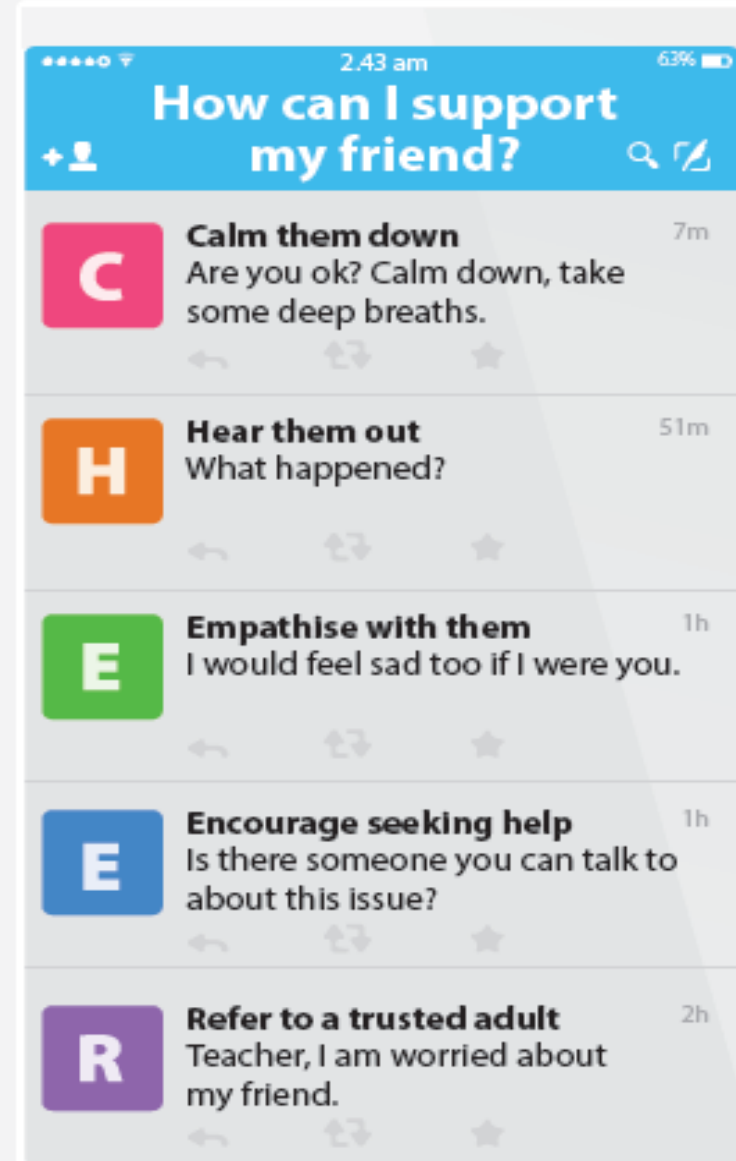
Or contact SOS 24-hour hotline at **1800-221-4444**

Supporting Your Friend

We may each experience different emotions upon receiving the results. You can share your friends' joy by congratulating them or give words of encouragement to friends who may be disappointed with their results.



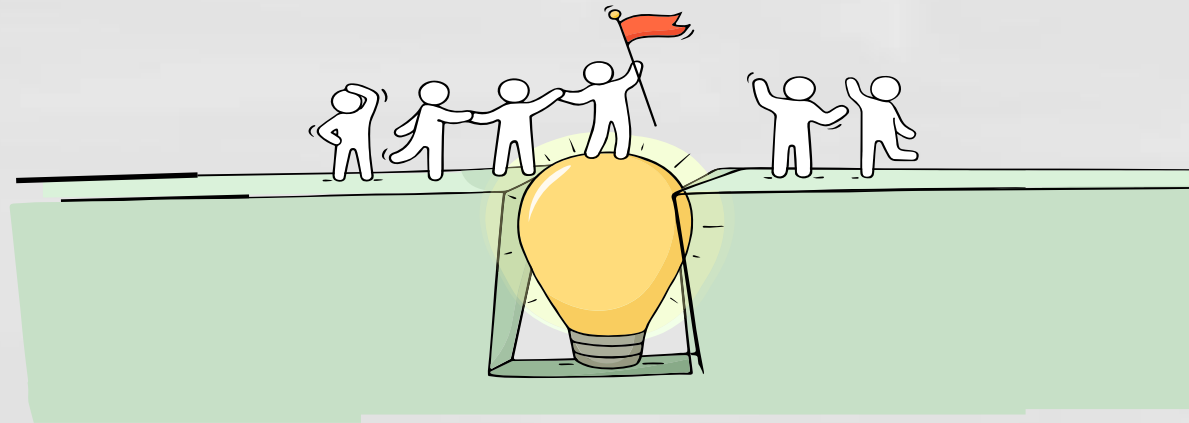
Keep a lookout for your friends in distress. You can support them in the following ways:



Reaching out for help is a sign of strength, not weakness.

Is there someone we can speak with?

If you have any concerns or are not coping, do reach out to someone you trust and speak with them. It could be a parent/guardian, teacher, School Counsellor or a friend that you can talk to.



Help is readily available for you.

Reach out to an ECG Counsellor!

- Making informed decisions is important for successful transition from school to further education.
- You may contact **our ECG counsellor, Ms. Leaw Hui Meen** at <https://wa.me/6568329385> for consult.
- Approach Ms. Leaw in the Pinnacle **Wednesdays** if you have any queries.
- Additionally, you may approach your **Class Mentors, Year Head and school counsellors** if you need advice.



Help is readily available for you.

There are other hotlines and chats available if you are more comfortable seeking help using these platforms.

SOS

SOS provides round the clock emotional support for those in distress, thinking of suicide or affected by suicide. This service is manned by trained volunteers.

Call: **1-767 or 1800-221-444**
(24-hour helpline)

There are also alternative avenues for emotional support through email and text messaging.

Email: **pat@sos.org.sg**
(Response within 48 hours)

SOS Care Text: **www.sos.org.sg**
(6pm – 6am on Mon to Thu and 6pm to 11:59pm on Fri)

Community Health Assessment Team (CHAT)

If you experience prolonged difficulties, CHAT provides personalised and confidential mental health checks and face-to-face consultation for youth aged 16 to 30. To speak with a youth support worker, you can

CHAT Hub at *SCAPE, #05-05
or

Call: **6493 6500/ 6501** or
Email:

CHAT@mentalhealth.sg



Help is readily available for you.

There are other hotlines and chats available if you are more comfortable seeking help using these platforms.

eC2

eC2 is an e-Counselling Centre where you can talk to a trained counsellor about the issues you are facing, right where you are.

Youths may chat with a counsellor online at:
www.ec2.sg

Monday – Friday
(Excluding Public Holidays): 10am – 12pm & 2pm – 5pm

TOUCHline

TOUCHline is a helpline to provide youths with emotional support and practical advice.

Call:**1800 3772252**

Monday – Friday
(Excluding Public Holidays): 9am – 6pm

mindline.sg

mindline.sg is an online platform that provides tools, tips and resources to help you manage your health and well-being. Explore and find out how you can improve your mental well-being and support your friends too.

Find out more:
www.mindline.sg



Thinking About Your Next Step



**Use 3 Key ECG
Questions To
Help You Get
Started**

Who am I?

The more I know about myself, the better my decisions.

Where do I want to go?

There are many pathways with opportunities for continuous learning and recognition.

How do I get there?

Be resilient, explore various pathways and be open to possibilities.



Resources to help you make informed decisions

MySkillsFuture Student Portal (Secondary)

Visit <https://go.gov.sg/MySFSec> for more information on post-GCE O-Level options

A Singapore Government Agency Website

MySkillsFuture

About Know Yourself World of Work Education Guide Help Feedback Login

What's new Events Useful links

- MOE Website
- Student Learning Space
- Early Admission Exercise
- Poly Foundation Programme
- NAFA Foundation Programme
- SP-CCA Athletics
- SP-CCA (Ethnic Dance)
- Art Elective Programme (AEP)
- Enhanced Art Programme (EAP)
- Music Elective Programme (MEP)
- Enhanced Music Programme (EMP)
- Applied Learning Programme (ALP)
- Learning for Life Programme (LLP)

About MySkillsFuture

A one-stop portal that empowers you to embark on a journey of self-discovery and make informed education and career choices. Use the information and tools to explore various education and career pathways, and take charge of your future.

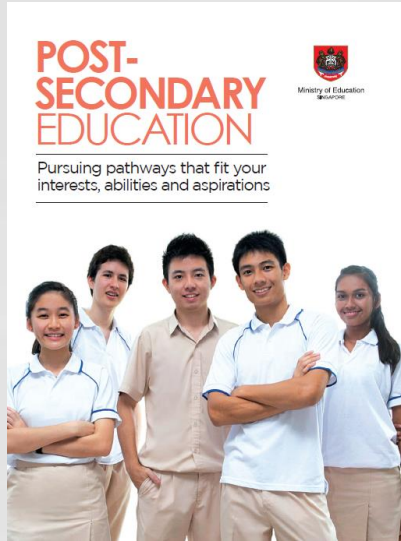
Find out more about yourself

Everyone has a set of unique attributes. The more you know about what you value, what you are interested in, and what you are good at, the more likely you will be able to make good choices in your education and career explorations.

Discover Now



Resources to help you make informed decisions



Post-Secondary Education booklet

Learn more about the post-secondary landscape

<https://moe.gov.sg/post-secondary/overview>



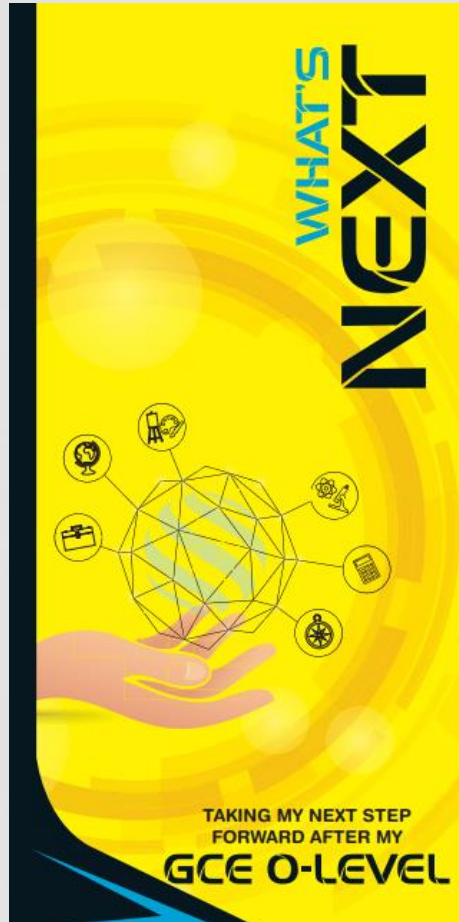
Post-Secondary Admissions Exercises booklet

A list of pathways you could consider after secondary school

<https://moe.gov.sg/post-secondary/admissions>



Resources to help you make informed decisions



What's Next after
GCE O-Level
pamphlet



<https://go.gov.sg/whatsnext-o-22>

Make an online or phone
counselling appointment with the
ECG Centre @ MOE (Grange
Road) through
<https://go.gov.sg/moe-ecg-centre>



Post-Secondary Education

Learn more about the admissions exercises and programmes.

<https://moe.gov.sg/post-secondary/admissions>



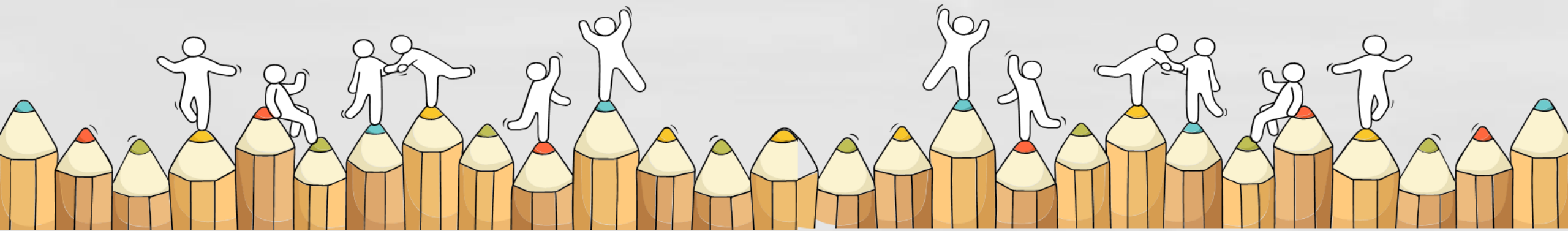
Learn more about the post-secondary education institutions.

<https://moe.gov.sg/post-secondary/overview>

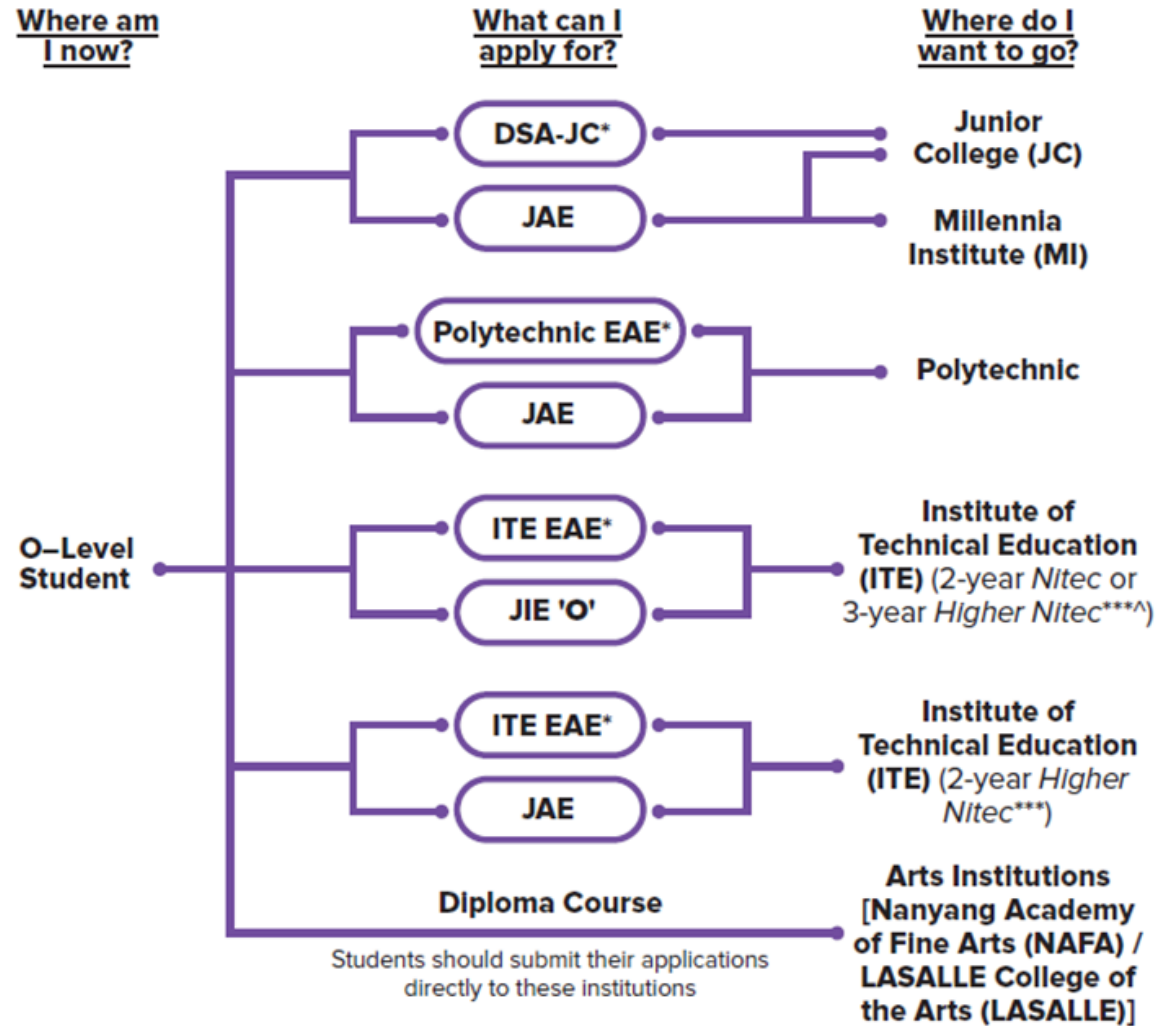


Admission Exercises

Things to note



Admissions Exercises for O-Level Students



<https://www.moe.gov.sg/post-secondary/admissions>

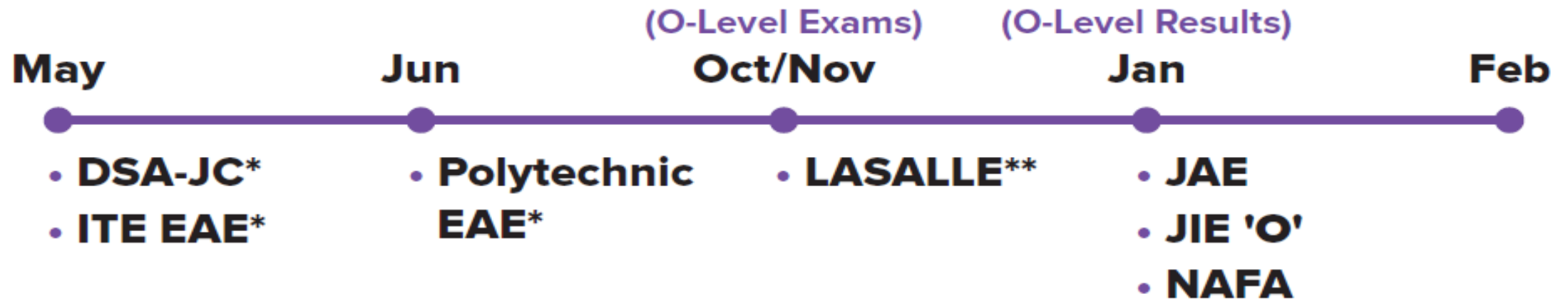


Source: A Guide to Post-Secondary Admissions Exercises



Admissions Exercises Application Timeline

When can I apply?



*Students can apply through these admissions exercises before their O-Level examinations.

**Application to LASALLE's diploma programmes starts from September.

***Certain *Nitec* and *Higher Nitec* courses are available in traineeship mode. For more information on applying to these courses, you can visit <https://ite.edu.sg/admissions/traineeship>.

^There are eleven 3-year *Higher Nitec* courses available for AY 2023.



Applications for 'O' Levels Students

1. Polytechnic Early Admissions Exercise (EAE) & Direct School Admission (DSA) for Junior Colleges
2. Joint Admissions Exercise (JAE)
3. Joint Intake Exercise (JIE) 'O'



Details of Admission Exercises

DSA-JC – Direct School Admission for Junior Colleges

DSA provides students with the opportunity to seek admission to JCs based on a broader range of talents and achievements.



go.gov.sg/applyjcDSA

Polytechnic EAE – Polytechnic Early Admissions Exercise

Polytechnic EAE is an aptitude-based admissions exercise that allows students to apply for and receive conditional offers for admission to polytechnics prior to receiving their final grades. It allows students to demonstrate their aptitudes and interests apart from academic grades, thus allowing a wider range of talents to be recognised.



go.gov.sg/polyeae

Polytechnic EAE & DSA for Junior Colleges

- Successful applicants will not be eligible for JAE.
- You are **expected to honour your offer**.
- You will not see the list of course when you open Form A.

- **For students who are unsuccessful, you will need to take part in the JAE to submit your choices.**



Details of Admission Exercises

JAE – Joint Admissions Exercise

JAE enables GCE O-level holders to apply for admissions to courses offered by JCs, MI, Polytechnics and ITE 2-year *Higher Nitec*.



go.gov.sg/applyjae

JIE 'O' – Joint Intake Exercise 'O'

The JIE 'O' is conducted to enable GCE O-Level holders to apply for the 2-year *Nitec* or 3-year *Higher Nitec* courses conducted by ITE.



go.gov.sg/applyjie

Minimum Eligibility Criteria

Junior Colleges	Millenia Institute	Polytechnics	ITE
<p>L1R5 ≤ 20* with minimum subject requirement: EL grade C6, MTL grade D7 (or HMTL E8 or MTLB pass) and Math grade D7 (or AddMath D7)</p> <p>(*Exclude bonus points)</p>	<p>L1R4 ≤ 20* with minimum subject requirement: EL grade C6, MTL grade D7 (or HMTL E8 or MTLB pass) and Math grade D7 (or Add Math D7)</p> <p>(*Exclude bonus points)</p>	<p>Must obtain net* ELR2B2 ≤ 26 (i.e. English Language, 2 relevant subjects and best 2 other subjects, <u>*including CCA Bonus Points</u>)</p>	<p>Must fulfill minimum entry requirements of the intended course (<u>CCA cannot be used to meet the minimum entry requirements</u>)</p>
<p>Applicants not meeting the subject requirement will be eligible for conditional admission</p> <p><small>*Posting to a course does not guarantee that applicants will be able to offer their preferred subject combinations. Applicants should check the website of the respective schools for more details for subjects offered.</small></p>	<p>Applicants not meeting the subject requirement will be eligible for conditional admission</p>	<p>Must fulfill minimum entry requirements of the intended course (<u>CCA cannot be used to meet the minimum entry requirements</u>)</p>	<p>Refer to ITE's Admission Booklet or website www.ite.edu.sg</p>



Refer to Section 6 of the JAE Information Booklet for details

Details of Admission Exercises

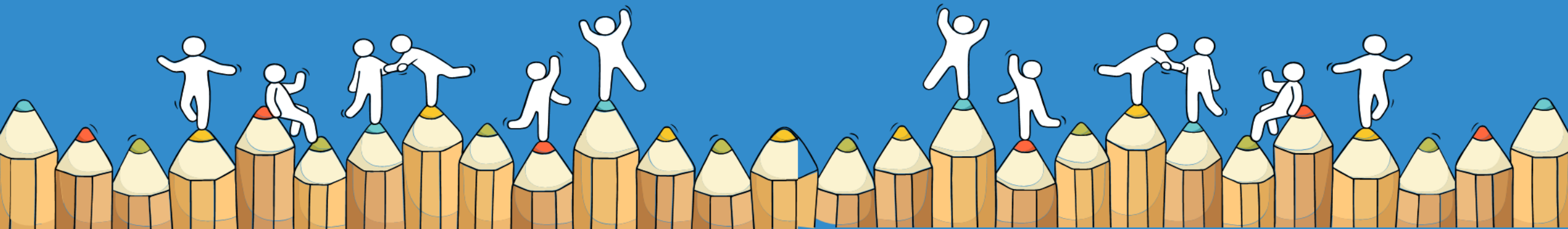
Arts Institutions – NAFA/ LASALLE

GCE O-Level holders with the aptitude and interest to pursue the creative arts at the tertiary level may apply for diploma programmes at the Arts Institutions (AIs). Each AI runs its own admissions exercise, and interested students should apply directly to the institution.

NAFA: go.gov.sg/applynafa

LASALLE: go.gov.sg/applylasalle

For Students Planning for Private Education



Admissions Exercises Application Timeline

Reasons

Why are you
furthering
your studies?

Readiness

How ready
are you to
further your
studies?

Risks

Do you know
the possible
drawbacks?

For more info: <https://go.gov.sg/pei-studentresourc>

8 Things You Should Know Before You Enrol in A Private School

School Registration



Ensure the school is registered with CPE. Review the school's registration period, expiry date and its overall registration track record.

Partner Institution



Research on the partner institution conferring the diploma or degree, and whether the qualification is recognised by the industry.

EduTrust Certification Scheme



Is the school EduTrust-certified*? Under the scheme, private schools are assessed for their performance in areas such as school management and provision of student support services.

**Schools are required to obtain EduTrust certification in order to offer external degree programmes*

School Premises

Head down to the campus ground to check the facilities and support services. Observe the study environment too.



Fee Protection



Ask if there is any course fee protection so that you will be able to recover unconsumed course fees should the school close down.

Beyond Course fees



Find out about the course syllabus and materials, graduation rates and employment prospects. Approach the alumni to find out what they think of the school.

Teachers

Check if the teachers are qualified to teach the course.



Internship

If industry attachment is included, find out which organisation you will be attached to, the period of attachment and the alternative arrangement should the attachment become unavailable. Verify the information with the organisation as well.



Key Dates for Jan 2023 JAE

GENERAL INFORMATION

SECTION

1

1 Joint Admissions Exercise (JAE)

1.1 The Joint Admissions Exercise (JAE) is conducted annually by the Ministry of Education (MOE) to allow holders of Singapore-Cambridge GCE O-Level certificate to apply for admission to courses offered by junior colleges (JC), the Millennia Institute (MI), polytechnics and Institute of Technical Education (ITE).

2 Eligibility to Participate

2.1 The following groups of students are eligible to participate in the JAE:

2.1.1 **All Singapore Citizens or Singapore Permanent Residents (SC/SPR) with valid GCE O-Level examination results.** However, any SC/SPR who was previously admitted to a JC, MI, polytechnic, ITE¹ should not apply for an institution in the same category through the JAE.

2.1.2 **International Students studying in a Government School, Government-Aided School or Independent School in Singapore** with valid 2022 Singapore-Cambridge GCE O-Level examination results.

2.2 All students successfully admitted to a school through the Direct School Admission-JC Exercise/ Polytechnic Early Admissions Exercise/ITE Early Admissions Exercise will not be able to participate in JAE. They will be informed of their allocated schools together with the release of the GCE O-Level examination results. Unsuccessful students will be able to participate in JAE and they will receive JAE Form A containing courses that they are eligible to apply for.

3 Important Dates

3.1 Below are some important dates (tentative) for 2023 JAE.

Key Event	Tentative Date(s)
Students to check and confirm the accuracy of their co-curricular attainments recorded in their co-curricular activity (CCA) records and inform their school of any discrepancies	By 30 September 2022
Release of Singapore-Cambridge GCE O-Level examination results	Between 12 and 16 January 2023
Submission of JAE registration via JAE Internet System (JAE-IS)	6 calendar days starting from the release of O-Level results (e.g. if O-Level results are released on 12 January 2023, registrations can be submitted from 12 to 17 January 2023). The JAE Internet System (JAE-IS) is accessible 24 hours starting from 3.00pm on the first day until 4.00pm on the last day of registration. All students should submit their registration using the JAE-IS. Students who are unable to submit via JAE-IS can seek assistance using the JAE Request Form at www.moe.gov.sg/jaerequestform . All submissions must be done by 4.00pm on the last day of registration.
Release of Posting Results	2 February 2023 (tentative)
Students to report to school* (For Students posted to JC/MI only)	3 February 2023 (tentative)

* Students posted to polytechnic and ITE will be informed by the respective institution in due course.

¹ Current students in the 2-year Higher Nitec courses and students in Year 2 or 3 of the 3-year Higher Nitec courses (for courses under the enhanced curricular structure) who wish to seek re-admission to ITE, should approach ITE directly instead of participating in JAE. Students who left their ITE courses due to disciplinary reasons within the past 2 years and recent Higher Nitec graduates who graduated on or after 1 May 2022, should not apply for Higher Nitec courses under JAE 2023. Any JAE posting of these students/graduates to ITE could be invalidated by ITE.

Refer to Pg 1 of **JOINT ADMISSIONS EXERCISE (JAE) 2023 BOOKLET.**

For instructions on Application;
Checking of Course Interview;
Acceptance of Offer; Appeal,
refer to the following pages.

Registration: Pg 7


Release & Appeals: Pg 13

Remember to register with your personal email.



<https://go.gov.sg/jae2023infobooklet>

How to Read Your Form A

**20XX Joint Admissions Exercise** **Form A**

Ministry of Education
SINGAPORE

Name : NAM SIL Address : 123 ANG MIO KIO STREET 123 #04-123 SINGAPORE 123456 School Code : 3001	00001-0001	JAE PIN : FCHCH1234567 Centre Index No. : 1820110001
---	------------	---

Please register your course choices by **DD/MM/YYYY, 04:00PM**.

Your 20XX GCE 'O' Level Examination results:
ENGLISH LANGUAGE = B3, MALAY = A1, MATHEMATICS = A1, ADDITIONAL MATHEMATICS = A1, PHYSICS = A2,
CHEMISTRY = A2, BIOLOGY = A2, HUMANITIES (SOCIAL STUDIES, HISTORY) = B4, GEOGRAPHY = B3
CCA = EXCELLENT

Your aggregate scores:

JC	MI	Polytechnic				ITE		
L1R5	L1R4	ELR2B2-A	ELR2B2-B	ELR2B2-C	ELR2B2-D	ELB4-A	ELR1B3-B	ELR2B2-C
11	0	0	0	0	0	0	0	0

Your eligible courses:

- You meet the entry requirements for the below courses and are eligible to apply. However, a place in the course is not guaranteed as admission is based on merit, your choices and available vacancies.
- Course codes and descriptions can be found in the JAE Information Booklet.

JC/MI:
You are eligible for all JC/MI courses.

Polytechnic/ITE:

C33 C34 C35 C36 C38 C41 C42 C43 C45 C46 C47 C49 C50 C51 C52 C54 C59 C60 C62
C63 C64 C65 C66 C67 C69 C70 C71 C72 C73 C75 C80 C81 C83 C85 C87 C89 C93 C94
C96 C97 C98 N11 N12 N13 N40 N41 N42 N43 N44 N45 N48 N50 N51 N53 N54 N55 N56
N57 N59 N60 N65 N67 N69 N71 N72 N73 N74 N81 N82 N83 N85 N91 N93 N94 N96 N97
N98 R11 R12 R13 R14 R16 R17 R18 R19 R21 R22 R24 R25 R26 R28 R29 R32 R33 R34
R35 R36 R37 R39 R40 R41 R42 R43 R45 R46 R47 R48 R49 R50 R52 R53 R54 R55 R56
R57 R58 R59 R60 S30 S31 S32 S35 S38 S39 S40 S41 S42 S43 S47 S48 S50 S53 S54
S56 S63 S64 S66 S67 S68 S69 S70 S71 S73 S74 S75 S76 S86 S88 S89 S90 S91 S93
S94 S95 S97 S98 S99 T01 T02 T04 T07 T08 T09 T10 T13 T17 T18 T20 T22 T23 T25
T26 T28 T29 T30 T33 T35 T38 T40 T43 T45 T48 T50 T51 T52 T53 T56 T58 T59 T60
T62 T63 T64 T65 T66 T67 T68 V10 V11 V12 V13 V14 V15 V18 V19 V21 V26 V27 V28
V29 V30 V35 V39 V40 V41 V42 V44 V45 V47 V49 V52 V54 V55 V56 V60 V61 V62 V63
V64 V65 V66 V67 V68 V69 V70 V71 V72 V73 V74 V75 V77 V78 V80 V81 V82 V84 V85
V86 V87 V88 V89 V90 V91 V92 V93 V94 V95 V96 V97 V98 V99

Note:

- You can also apply for Nitec courses in the Joint Intake Exercise (JIE) conducted by ITE. Please see ITE's admission booklet or www.ite.edu.sg.

Refer to Pg 9 of the **JAE 2023 BOOKLET** to understand how to read Form A.

How to Read Your Form A

Name : NAM SIL	000005-3621	JAE PIN : FCH37934	←
Address : 123 ANG MO KIO #01 - 123 SINGAPORE		Centre Index No. : 1526010048	
School Code : 3621			

JAE PIN.

There will be no registration after DD/MM/YYYY 04:00PM.

Your GCE 'O' Level Examination results are as follows:

11 = A1 22 = B3 41 = A1 42 = A1 44 = A1 45 = A1 63 = A1

CCA = EXCELLENT

Your aggregate scores are as follows:

JC : L1P

MI : L1P

Poly : EL

ITE : ELB4-A=5

ELR1B3-B=5

ELR2B2-C=5

Aggregates reflected are before CCA bonus

Subject code and grade based on your examination results.

Aggregate types.

Based on the 2018 GCE 'O' Level Examination results, you are eligible to apply for all courses offered by JC (2-Year Duration) and MI (3-Year Duration). The JC and MI course codes can be found in the Joint Admissions Exercise Booklet. You are also eligible for the Polytechnic / ITE courses listed below. Though you are eligible for these courses, admission to

CCA bonus point. Already taken into account for Poly/ ITE courses eligible to apply.

C34	C35	C36	C38	C39	C40	C41	C42	C43	C45	C46	C47	C48	C49	C50	C51	C52
C54	C57	C59	C60	C61	C62	C63	C64	C65	C66	C67	C69	C70	C71	C72	C73	C74

Refer to Pg 9 of the **JAE 2023 BOOKLET** to understand how to read Form A.

Jan 2023 JAE

2023 JOINT ADMISSIONS EXERCISE WORKSHEET

This JAE worksheet is provided to assist you before you do your online course registration.

(A) Personal Particulars

Please fill in your personal particulars and update them as necessary in the online system.

NRIC/FIN : _____
Name : _____
Mobile Number* : _____
Contact Number : _____
Email Address^ : _____

*Your posting result will be sent via SMS to a valid Singapore mobile number.

^Your JAE verification slip, which captures your submitted course preferences, will be sent to this email address.

(B) Course Preference

You are only allowed to specify courses that you are eligible for, up to a maximum of 12 courses.

You are strongly advised to make full use of the 12 choices, where applicable.

Please refer to your Form A and Information Booklet for course eligibility details.

Choice Order	Course Code	Choice Order	Course Code
1 st		7 th	
2 nd		8 th	
3 rd		9 th	
4 th		10 th	
5 th		11 th	
6 th		12 th	

(C) Elective Programmes

This section only applies to students who are eligible for the following elective programmes.

If you qualify and wish to apply, you must select the JC(s) offering the programme as one of your choice(s) in (B) Course Preference.

Please note that you may apply for only **ONE** Programme.

<u>Chinese Language Elective Programme (CLEP)</u>	<u>Malay Language Elective Programme (MLEP)</u>	<u>Tamil Language Elective Programme (TLEP)</u>
I would like to apply for CLEP in the following JC(s): <input type="checkbox"/> Dunman High School <input type="checkbox"/> Hwa Chong Institution <input type="checkbox"/> Jurong Pioneer JC <input type="checkbox"/> Nanyang JC <input type="checkbox"/> Temasek JC	I would like to apply for MLEP in the following JC(s): <input type="checkbox"/> Jurong Pioneer JC <input type="checkbox"/> National JC <input type="checkbox"/> Raffles Institution <input type="checkbox"/> Tampines Meridian JC <input type="checkbox"/> Yishun Innova JC	I would like to apply for TLEP in the following JC(s): <input type="checkbox"/> Anderson Serangoon JC <input type="checkbox"/> National JC

After you have completed this JAE worksheet, please submit your application online at www.moe.gov.sg/jae

Refer to Pg ii of
JAE 2023 BOOKLET.

To fill in the worksheet to assist you before you do your online course registration.

Computation of Bonus Points

S/No	Type of Bonus Points	No. of Bonus Points	Maximum Bonus Points Allowable	
1	For students seeking admission to JC/MI/polytechnic/ITE and with the following co-curricular attainments/grades: a. Excellent, A1 – A2 b. Good, B3 – C6	2 points 1 point	Limited to a maximum of 4 bonus points for these 4 types.	Limited to a maximum of 6 bonus points .
2	For students seeking admission to JC/MI courses and with grades of A1 to C6 in both their first languages (i.e. English and a Higher Mother Tongue).	2 points		
3	For students seeking admission to JC/MI courses and with grades of A1 to C6 in Malay/Chinese (Special Programme) (MSP/CSP) or Bahasa Indonesia (BI) as their third language.	2 points		
4	For students from feeder schools if they choose their affiliated junior college course(s) as their: a. 1 st choice, <u>or</u> b. 1 st and 2 nd choices. Please refer to Annex D for information on affiliated schools.	2 points		
5	For students who have applied for the CLEP/MLEP/TLEP and have been selected for the programme.	2 points		

Refer to Pg 12 of
JAE 2023 BOOKLET.

Affiliated JC Bonus Points

Choices	Scenario 1 (1 st choice)	Scenario 2 (1 st & 2 nd choice)	Scenario 3 (1 st choice)	Scenario 4
First Choice	CJC (Science) Valid BP	CJC (Science) Valid BP	CJC (Art) Valid BP	SAJC
Second Choice	SAJC	CJC (Art) Valid BP	NJC	CJC (Art) No BP
Third Choice	MI	RP Sports Science	CJC (Science) No BP	NYP Media

Affiliated JC Bonus Points

Choices	Scenario 1 (1 st choice)	Scenario 2 (1 st & 2 nd choice)	Scenario 3 (1 st choice)	Scenario 4
First Choice	CJC (Science) Valid BP	CJC (Science) Valid BP	CJC (Art) Valid BP	SAJC
Second Choice	SAJC	CJC (Art) Valid BP	NJC	CJC (Art) No BP
Third Choice	MI	RP Sports Science	CJC (Science) No BP	NYP Media

Affiliated JC Bonus Points

Choices	Scenario 1 (1 st choice)	Scenario 2 (1 st & 2 nd choice)	Scenario 3 (1 st choice)	Scenario 4
First Choice	CJC (Science) Valid BP	CJC (Science) Valid BP	CJC (Art) Valid BP	SAJC
Second Choice	SAJC	CJC (Art) Valid BP	NJC	CJC (Art) No BP
Third Choice	MI	RP Sports Science	CJC (Science) No BP	NYP Media

Affiliated JC Bonus Points

Choices	Scenario 1 (1 st choice)	Scenario 2 (1 st & 2 nd choice)	Scenario 3 (1 st choice)	Scenario 4
First Choice	CJC (Science) Valid BP	CJC (Science) Valid BP	CJC (Art) Valid BP	SAJC
Second Choice	SAJC	CJC (Art) Valid BP	NJC	CJC (Art) No BP
Third Choice	MI	RP Sports Science	CJC (Science) No BP	NYP Media

JAE Application Period

Application Period: **12 Jan, Thu 3 pm to 17 Jan Tue 4 pm**

JAE-IS (JAE Internet System) website: <https://www.moe.gov.sg/jae/>

JAE 2023 booklet: <https://go.gov.sg/jae2023infobooklet>

Assess using NRIC/FIN number and JAE-PIN found in Form A

MOE Customer Service Centre: 6872 2220

DO NOT LOSE YOUR JAE-PIN!



Summary of Important Dates

Admission Exercise	Application Dates	Date of Posting Result	Date of Reporting to School
JAE registration (JC/ MI/ Poly)	Start: 12 Jan 2023, 3pm End: 17 Jan 2023, 4pm	2 Feb 2023 9 am	3 Feb 2023 (for JC/ MI only) For Poly applicants: a letter from the respective institutions will be sent on the enrolment details.



Accept the offer before submitting your appeal through JAE appeals website: <https://jaeappeal.edu.sg>

Summary of Important Dates

Admission Exercise	Application Dates	Date of Posting Result	Date of Reporting to School
JAE 2 years Higher Nitec	Start: 12 Jan 2023, 3pm End: 17 Jan 2023, 4pm	2 Feb 2023 9 am	3 Apr 2023
JIE (O)	Start: 12 Jan 2023, 3pm End: 16 Jan 2023, 4pm	19 Jan 2023 2 pm	25 Jan 2023

Accept the offer before submitting your appeal through JAE appeals website:
<https://jaeappeal.edu.sg>



Key Pointers for Students on JAE Exercise

Students must report to the institution they are posted to or accept the course offer online while waiting for the result of their transfer application. Any student who fail to do so will be deemed to have forfeited his place in the course.

Consider your course choices wisely, i.e. consider courses that are comparable to your aggregate scores, for better fit and chances of admission.

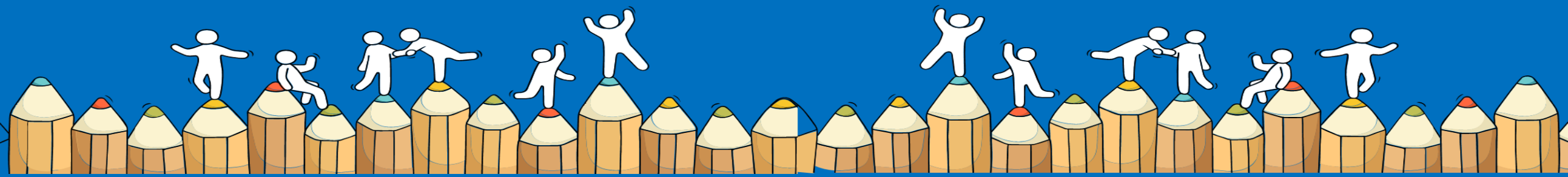
Accept the offer before submitting your appeal through JAE appeals website:
<https://jaeappeal.edu.sg>

Make full use of your 12 choices (where applicable) and indicate at least 2-3 courses where your aggregates scores are much better than the previous year's course cut-off points (COPs).

[for JC applicants] Note that appeals to JC are not likely to be successful unless you first meet the COP of the JC course for this year's JAE.

What's NEXT?

After Receiving O-LEVEL Results



Registration Support in School

Venue: Computer Lab 3

Date	Time
13 Jan 2023 (Fri)	2.30 pm to 4.30 pm
16 Jan 2023 (Mon)	

Please seek assistance from

- Desktop Engineer if you encounter technical problems.
- Year Head if you need help with the registration process.



Other Administrative Matters

1. Check accuracy of your personal information on your result slip & certificate.

S/N	Scenario	Instructions
1	Appeal for review of results	Please report to General Office today, 12 Jan @ 3 pm to see school leader.
2	Intention to repeat	Make appointment with school clerk to see school leader on Monday, 16 Jan at the General Office

2. All ICON Email accounts have been deactivated. **Update your contact number (HP)** with your class mentors.



Final Reminders

Check that you have received the following:

- O Level Result slip
- Form A
- *Examination Certificate
- ECG materials
- *Form P (for students who are eligible for PFP)
- *2023 Intake Exercise Booklet

* For certain group of students only



Where to Access the Materials



MONTFORT COMMUNITY ▾ CO-CURRICULAR ACTIVITIES ▾ CURRICULUM ▾ QUICKLINKS ▾ ADMISSION ▾



Scholar. Sportsman. Gentleman. Leader. A Man for Others. ×



MONTFORT TIMES

Montfort Heartbeat

ALP

Applied Learning Programme

STUDENT ICON

Student Resources

OUR LATEST NEWS

Announcements

2023

Release of 2022 GCE O Level Results

10 JAN 2023

2023

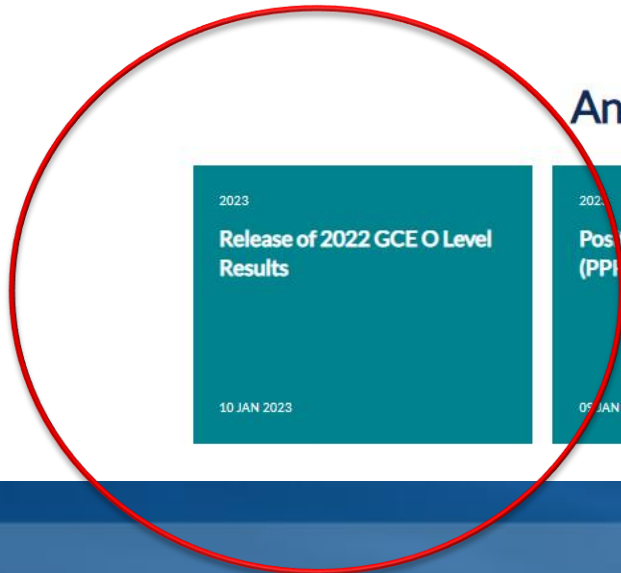
Positive Parenting Programme (PPP) for all Sec 1 Parents

09 JAN 2023

2023



2023 Sec 1 Registration and Onboarding

21 DEC 2022



Where to Access the Materials

Dear 2022 Sec 4 & 5 Montfortians,

1. Please be informed that the O-Level results will be released on 12 January 2023.
2. You are expected to report to the School Hall at 1.45 pm in full school uniform and groomed according to the standards laid out in the Praise and Grace Journal for the collection of result slips. No inappropriate hairstyle or coloured hair. You will not be allowed into the school until your grooming is rectified.
3. Please refer to  [Release of 2022 O-Level Results](#) for more information.
4. Please click [here](#) to access the Post-Secondary Education school website to help you in your decision-making of your journey after O-Level.
5. Please click here to access the [2023 Joint Admission Exercise \(JAE\) Information booklet](#) and  [2023 Joint Intake Exercise \(JIEO\)](#) for GCE 'O' Level Holder.

For more information, you may visit <https://www.moe.gov.sg/post-secondary/admissions/jae>.



Summary of Open Houses

School	Dates	Time
<u>Anderson Serangoon Junior College</u>	13 Jan 2023	1pm – 5.30pm
<u>Catholic Junior College</u>	13 Jan 2023	10am – 4pm
<u>Dunman High School (Junior College)</u>	14 Jan 2023	9am – 1pm
<u>Eunoia Junior College</u>	13 Jan 2023	9am – 4pm
<u>Hwa Chong Institution</u>	13 Jan 2023	11.30am – 4pm
<u>Jurong Pioneer Junior College</u>	13 Jan 2023	9am – 4pm
<u>Millennia Institute</u>	13 Jan 2023	12pm – 5.30pm
<u>National Junior College</u>	13 Jan 2023	9am – 3pm
<u>Raffles Institution</u>	13 Jan 2023	10am – 2.30pm



Summary of Open Houses

School	Dates	Time
<u>River Valley High School (Junior College)</u>	13 Jan 2023	9am – 12pm
<u>St Andrew Junior College</u>	13 Jan 2023	9am – 4pm
<u>Temasek Junior College</u>	13 Jan 2023	1.30pm – 4.30pm
<u>Tampines Meridian Junior College</u>	13 Jan 2023	10.15am – 4pm
<u>Victoria Junior College</u>	14 Jan 2023	8.30am – 4pm
<u>Yishun Innova Junior College</u>	13 Jan 2023	10am – 4pm
Nanyang Polytechnic (https://openhouse.nyp.edu.sg)	12-17 Jan 2023	
Singapore Polytechnic (https://hellospace.sp.edu.sg/openhouse)	12-17 Jan 2023	



The O-Level is not
the destination.

It is part of your
education journey.



All the Best!
Age Quod Agis

