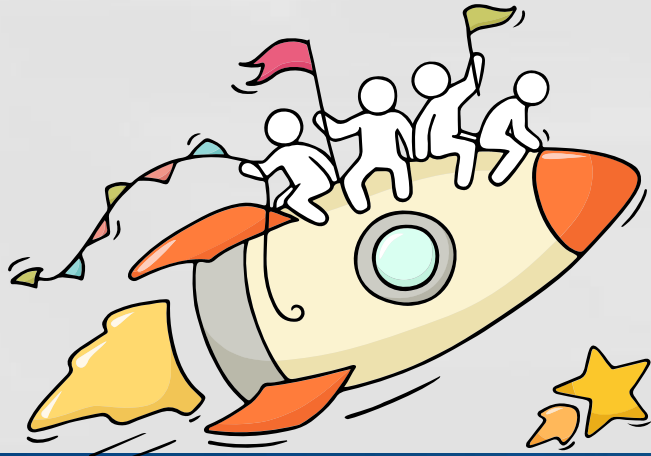


2023
GCE N-Level Results
Administrative Briefing



Dear students,

As we gather here today, let us all celebrate our efforts!



Finally, we are going to get our results!



- Support/ Resource Sharing
- Admission Exercise

Think about your opportunities

You may be:

- You are happy that your results meet your expectations;
- You are overjoyed that your results exceed your expectations, or;
- You are worried/upset because your results fall short of your expectations.



As there are **many pathways and opportunities**, remember that **everyone's learning journey is different** and **each one can have a fulfilling outcome!**



Thinking about Your Next Step?

Consider these questions!

Where do I want to go?

There are many pathways with opportunities for continuous learning and recognition.

Who am I?

The more I know about myself, the better my decisions.



How Do I Get There?

Be resilient, explore various pathways and be open to possibilities.



No matter the circumstances, there is always a way forward.

Stop

- Calm yourself down. Take a few deep breaths.

Think

- Think through the different options that are available for you. Keep things in perspective.
- Remember that the N-Level is one part of your life journey and not the destination.

Do

- Approach a trusted adult and seek his/her help. Have a conversation with this person about what would be best for you.
- Make a decision and take action based on your options.

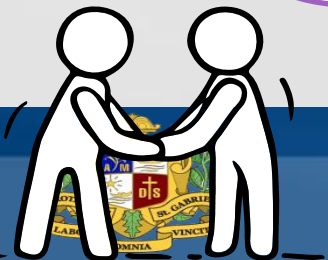
When you receive your results, you may experience a range of emotions.

Managing these emotions well will allow you to stay calm and make rational decisions.



Keep a lookout for some of these signs in your peers or yourself.

How can we support one another?



D

Deliberately avoiding others

I

Increased irritability, restlessness, agitation, stress and anxiety

S

Sending or posting moody messages on social media

T

Talking about death or dying

R

Reacting differently or gradually losing interest in things they used to like

E

Eating more than usual or having a much reduced appetite

S

Sleep pattern changes with difficulty falling asleep or oversleeping

S

Slowing down of energy levels



Ministry of Education
SINGAPORE

If you notice any of these signs in yourself or your friends,
have a chat with your school counsellor or teacher

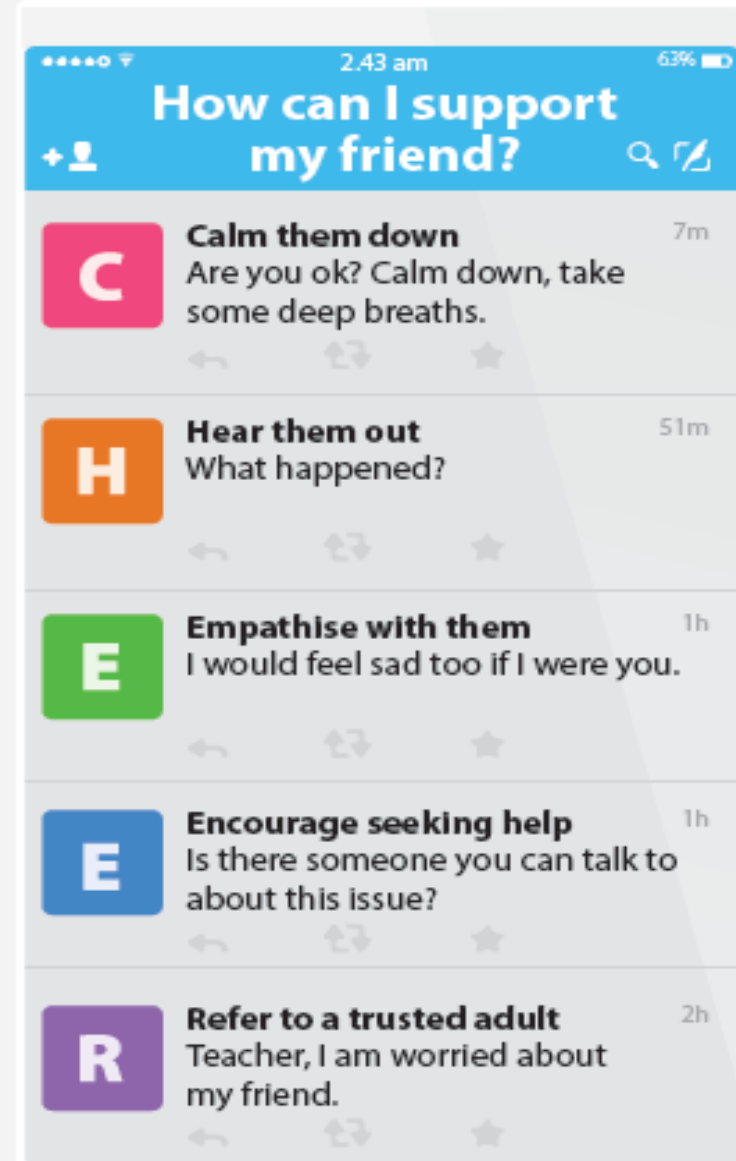
Or contact SOS 24-hour hotline at **1800-221-4444**

Supporting Your Friend

We may each experience different emotions upon receiving the results. You can share your friends' joy by congratulating them or give words of encouragement to friends who may be disappointed with their results.



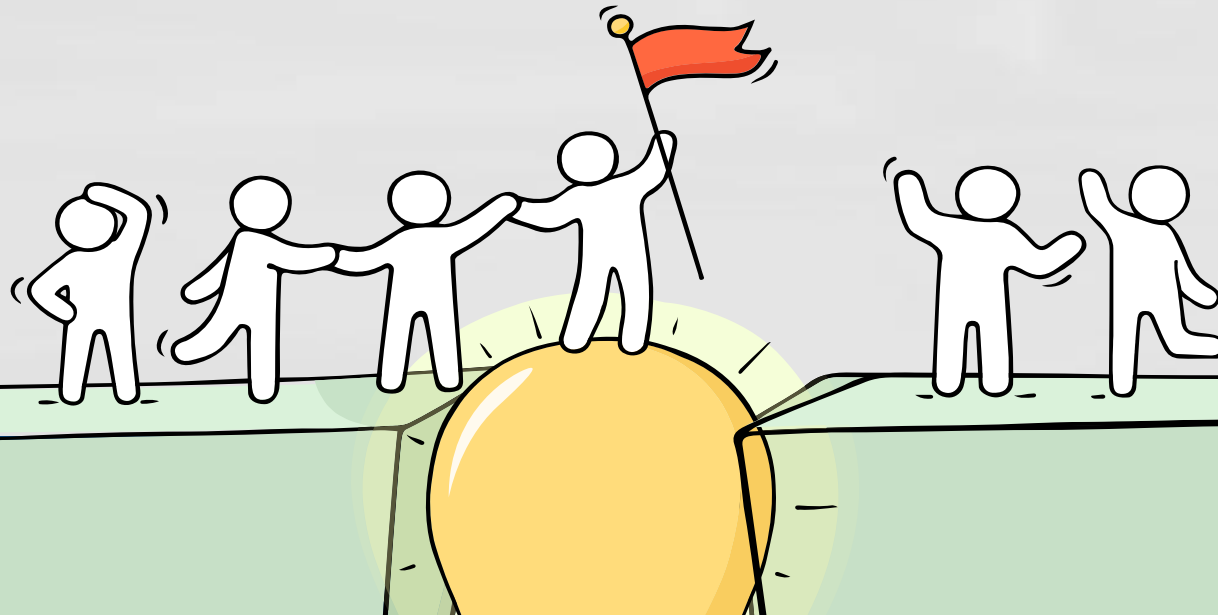
Keep a lookout for your friends in distress. You can support them in the following ways:



Reaching out for help is a sign of strength, not weakness.

Is there someone we can speak with?

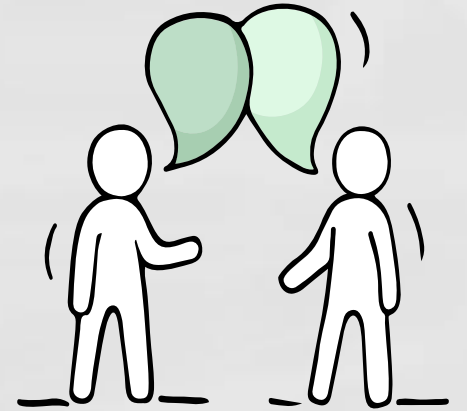
If you have any concerns or are not coping, do reach out to someone you trust and speak with them. It could be a parent/guardian, teacher, School Counsellor or a friend that you can talk to.



Help is readily available for you.

Reach out to an ECG Counsellor!

- Book a consultation session with **our ECG counsellor, Mr. Isaac Ang** using the QR code on the right.
- Do approach Mr. Ang in the **STEM Studio this afternoon (18 Dec)** if you have any queries.
- Additionally, you may approach your **Class Mentors, Year Head and school counsellors** if you need advice.



Support is readily available for you.

There are other hotlines and chats available if you are more comfortable seeking help using these platforms. Scan the QR code below for a helpful resource.



SOS provides round-the-clock emotional support for those in distress, thinking of suicide or affected by suicide.
Call: **1767**
(24-hour helpline)

Whatsapp: **9151 1767**
(24-hour Care Text)

Community Health Assessment Team (CHAT) provides personalised and confidential mental health checks and consultation for youths. To speak with a youth support worker, you can:

Visit: **CHAT Hub at *SCAPE, #05-05**
Call: **6493 6500/ 6501**
Email: **CHAT@mentalhealth.sg**

mindline.sg is an online platform that provides tools, tips and resources to help you manage your health and well-being. Find out more at: **www.mindline.sg**

TOUCHline is a helpline to provide youths with emotional support and practical advice.

Call: **1800-377 2252**
Monday- Friday (Excluding Public Holidays): 9am – 6pm

Carey is an online platform by Care Corner that provides free mental health check-ins with mental health professionals. Find out more at: <https://carey.carecorner.org.sg/>

eC2 is an e-Counselling Centre where you can talk to a trained counsellor about the issues you are facing, right where you are.

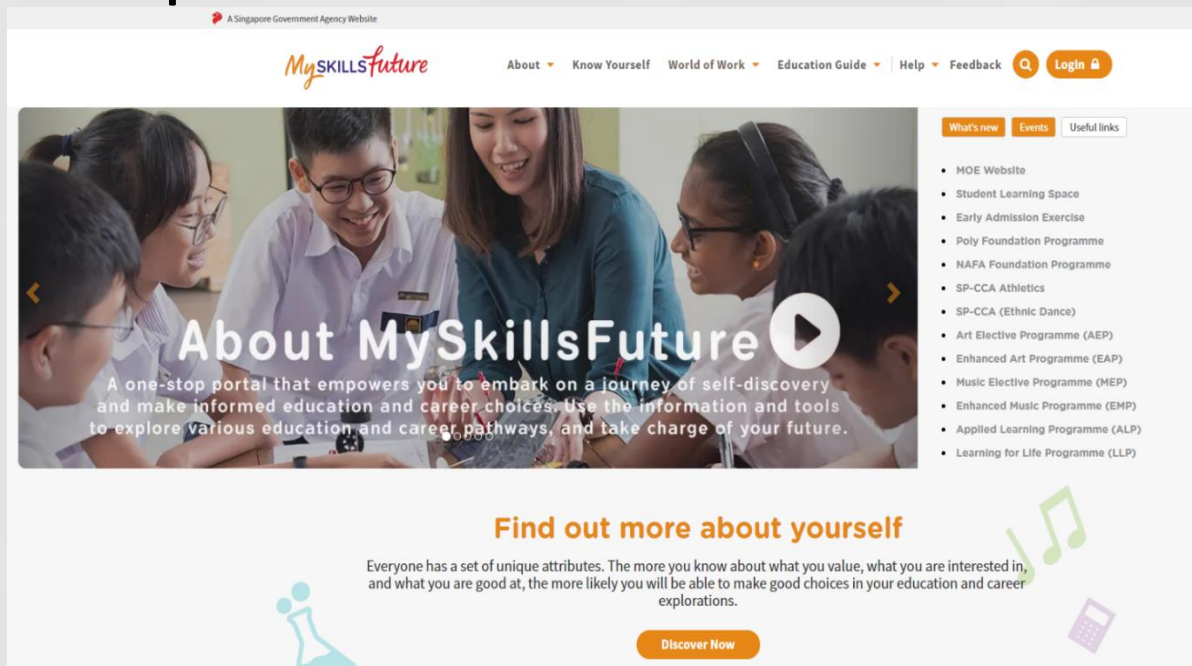
Chat with a counsellor at: www.ec2.sg
Monday – Friday (Excluding Public Holidays): 10am – 12pm & 2pm – 5pm



Resources to help you make informed decisions

MySkillsFuture Student Portal (Secondary)

Visit <https://go.gov.sg/MySFSec> for more information on post-GCE N-Level options



A Singapore Government Agency Website

MySkillsFuture

About Know Yourself World of Work Education Guide Help Feedback Login

What's new Events Useful links

- MOE Website
- Student Learning Space
- Early Admission Exercise
- Poly Foundation Programme
- NAFA Foundation Programme
- SP-CCA Athletics
- SP-CCA (Ethnic Dance)
- Art Elective Programme (AEP)
- Enhanced Art Programme (EAP)
- Music Elective Programme (MEP)
- Enhanced Music Programme (EMP)
- Applied Learning Programme (ALP)
- Learning for Life Programme (LLP)

About MySkillsFuture

A one-stop portal that empowers you to embark on a journey of self-discovery and make informed education and career choices. Use the information and tools to explore various education and career pathways, and take charge of your future.

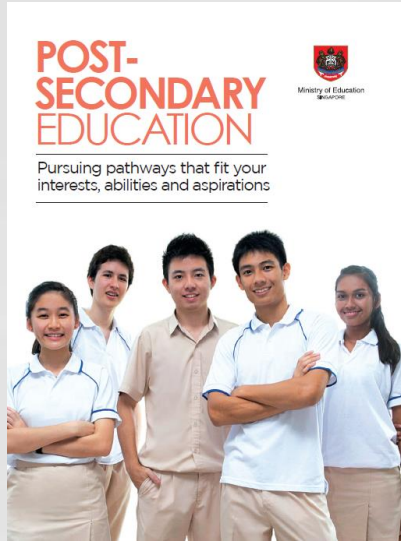
Find out more about yourself

Everyone has a set of unique attributes. The more you know about what you value, what you are interested in, and what you are good at, the more likely you will be able to make good choices in your education and career explorations.

Discover Now



Resources to help you make informed decisions



Post-Secondary Education booklet

Learn more about the post-secondary landscape

<https://moe.gov.sg/post-secondary/overview>



Post-Secondary Admissions Exercises booklet

A list of pathways you could consider after secondary school

<https://moe.gov.sg/post-secondary/admissions>



Resources to help you make informed decisions



What's Next after GCE
N-Level pamphlet



<https://go.gov.sg/whats-next-nlevel>

<https://go.gov.sg/whats-next-nlevel>



ECG Counselling Resources

School Education and Career
Guidance Counsellor,
Mr Isaac Ang



ECG Centre @ MOE (Grange
Road)

68311420

<https://go.gov.sg/moe-ecg-centre>



Post-Secondary Education

Learn more about the admissions exercises and programmes.

<https://moe.gov.sg/post-secondary/admissions>



Learn more about the post-secondary education institutions.

<https://moe.gov.sg/post-secondary/overview>





Unsure of what's next?

Explore different jobs and industries with On My Way (OMW). Find out if your career goal and educational pathway match your interests, values and ambitions. <https://www.nyc.gov.sg/omw/home>



KNOW IT ALL

provides consolidated information about different jobs and industries - key responsibilities, skills, career paths and more!



A Day in the Life of a Food Technologist

DAY IN THE LIFE

takes you into the lives of different professionals and give you a glimpse of their jobs and what it entails through the medium of videos.




TASTER PROGRAMMES

are micro-experiences of different job roles that allow you to get a taste of working life and help you decide what to study to achieve your career aspirations!



Resources for Parents

For more resources on providing social and emotional support, affirming your teen, and supporting your teen's transition through post N-Level education, please refer to: <https://go.gov.sg/selresforparents>.

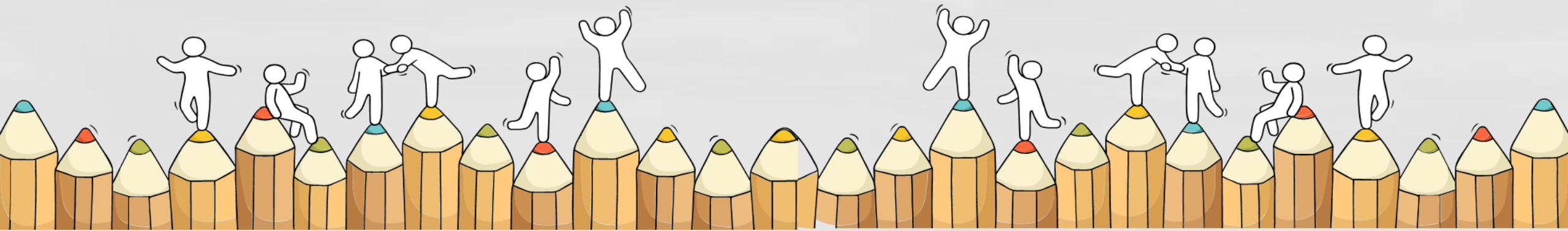


The screenshot shows the Ministry of Education Singapore website. The header includes the MOE logo and navigation links: Education levels, Financial matters, Education in SG, Newsroom, Careers, and About MOE. The breadcrumb trail reads: MOE > EDUCATION IN SG > OUR PROGRAMMES > SOCIAL AND EMOTIONAL LEARNING. The page title is "Social and emotional learning: Resources for parents" and it is dated "Last Updated: 16 October 2023". The main content area features a video player with the title "Social and Emotional Learning @ Home: The What, Why and How" and a description: "What is Social and Emotional Learning (SEL) and why is it important? Watch on for tips on how parents can support the SEL of their children." The video player interface includes a play button, a "Watch later" button, and a "Share" button.

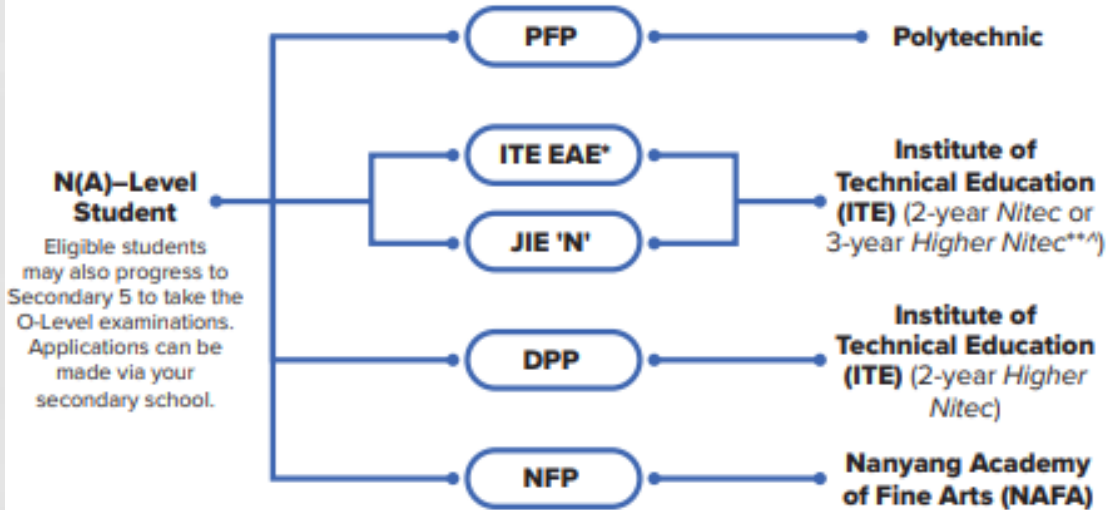


Admission Exercises

Things to note



Admissions Exercises for N-Level Students



When can I start to apply?

	(N-Level Exams)	(N-Level Results)	(Start of 2-year Nitec and 3-year Higher Nitec term)	(Start of Polytechnic and 2-year Higher Nitec term)
	Oct	Dec	Jan	Apr
May				
•• ITE EAE*		•• JIE 'N'	• PFP	
		• JIE 'E'	• DPP (2nd window of applications)	
		• DPP		
		• NFP		



<https://www.moe.gov.sg/post-secondary/admissions>



For more information on applying to these courses, you can visit <https://ite.edu.sg/admissions/traineeship>

For the list of 3-year Higher Nitec courses, please visit <https://www.ite.edu.sg/courses/full-time-courses/nitec-and-3-year-higher-nitec>

Selected Nitec and Higher Nitec courses are available in traineeship mode.

Admissions Exercises Application Timeline

(N-Level Results)	(Start of 2-year NITEC and 3-year Higher Nitec)	(Start of Polytechnic and 2-year <i>Higher Nitec</i> Term)
Dec	Jan	Apr
<ul style="list-style-type: none"> ●● JIE 'N' ● JIE 'E' ● DPP ● NFP 	<ul style="list-style-type: none"> ● PFP ● DPP <p>(2nd window of applications)</p>	

 N(T)–Level Student
 N(A)–Level Student



Details of Admission Exercises (EAE)

ITE EAE – ITE Early Admissions Exercise

ITE EAE is an aptitude-based admissions exercise that allows students to apply and receive conditional offers for admission to ITE based on their aptitude and interest, prior to receiving their final GCE N-Level examination results. It allows students to demonstrate their aptitudes and interests apart from academic grades, thus allowing a wider range of talents to be recognised.



go.gov.sg/iteeae

For Sec 4N(A) and 4N(T) students with confirmed ITE EAE offers:

- ❑ must honour their EAE offers.
- ❑ not allowed to apply for Nitec courses or 3-year Higher Nitec courses at the Joint Intake Exercise (JIE).
- ❑ But, Sec 4NA can still apply for the Direct-Entry-Scheme to Polytechnic Programme (DPP) after the release of the GCE 'N' Level results, or Polytechnic Foundation Programme (PFP) after the release of the GCE 'O' Level results, if they qualify.

Details of Admissions Exercises

JIE 'N'/JIE 'E' – Joint Intake Exercise



The JIE 'N' is for 2-year *Nitec* or 3-year *Higher Nitec* courses offered by ITE.

The JIE 'E' is for GCE N(T) students to apply for the 3-year *Nitec* course with Enhanced *Nitec* Foundation Programme.



go.gov.sg/applyjie

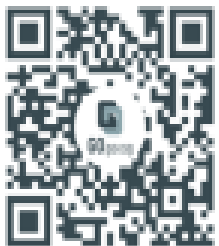
If eligible for JIE E,
apply for BOTH JIE N and JIE E.

-  N(T)-Level Student
-  N(A)-Level Student

Details of Admission Exercises (DPP)

DPP – Direct-Entry-Scheme to Polytechnic Programme

DPP allows Secondary 4N(A) students to be admitted directly into selected 2-year *Higher Nitec* programmes at ITE without having to sit for the O-Level examinations or undergo a *Nitec* programme. DPP students who successfully complete their *Higher Nitec* courses at ITE and attain the required qualifying Grade Point Average (GPA) scores are guaranteed a place in a polytechnic diploma course mapped to their *Higher Nitec* course.



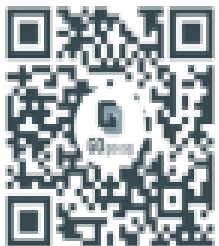
go.gov.sg/applydpp

- ❑ Serves as an alternative to Sec 5
- ❑ Prepares Sec 4N(A) students for progression into **selected** polytechnic diploma courses via
 - a **2-year Higher Nitec** programme at ITE, and
 - a **10-week DPP preparatory course**
- ❑ DPP students who successfully complete their Higher Nitec courses **and** attain the minimum GPA are subsequently **guaranteed a place in a polytechnic diploma course** mapped to their Higher Nitec course.
- ❑ **Unsuccessful applicants** can apply for progression to Sec 5 N(A) or for Nitec/3-year Higher Nitec courses in 2nd phase

Details of Admission Exercises (DPP)

DPP – Direct-Entry-Scheme to Polytechnic Programme

DPP allows Secondary 4N(A) students to be admitted directly into selected 2-year *Higher Nitec* programmes at ITE without having to sit for the O-Level examinations or undergo a *Nitec* programme. DPP students who successfully complete their *Higher Nitec* courses at ITE and attain the required qualifying Grade Point Average (GPA) scores are guaranteed a place in a polytechnic diploma course mapped to their *Higher Nitec* course.



go.gov.sg/applydpp

- ❑ Students who have sat for both GCE N-Level and GCE O-Level examination subjects **can apply for the DPP prior to the release of their GCE O-Level results.**
 - Use both their GCE N-Level results, and **results from their school-based prelim exams for O-level subjects.**
 - Successful DPP applicants will receive an offer for a DPP course & do not need to return to schools for Sec 5N(A).
 - **Being eligible to apply does not guarantee** you a place in a DPP Higher Nitec course.
- ❑ Upon the release of the O-Level examination results, ITE will verify if applicants have fulfilled the criteria for admission to the DPP.
- ❑ Students who are newly-eligible for the DPP **after the release of the O-Level results in 2024** may also apply in January 2024.

DIRECT-ENTRY-SCHEME TO POLYTECHNIC PROGRAMME (DPP)

5 Things You Need to Know

1. What is the DPP?

- Prepares Sec 4N(A) students for progression into selected polytechnic diploma courses via a 2-year *Higher Nitec* programme at ITE, and a 10-week DPP preparatory course
 - Serves as an alternative to Sec 5
- DPP students who meet the minimum qualifying GPA score are guaranteed a place in a polytechnic diploma course mapped to the *Higher Nitec* course. (Refer to <https://www.ite.edu.sg/admissions/full-time-courses/higher-nitec-dpp> for course mapping.)
- About 1,200 places offered across 18 *Higher Nitec* courses

2. Am I eligible for DPP?

- Sec 4N(A) student who has sat for GCE N-Level exams in 2023
- Obtained ELMAB3 aggregate of 19 points or less (before deduction of CCA bonus points)
- Meet course-specific entry requirements
- you can check all 3 boxes above, you're eligible!**
(Note: Being eligible to apply does not guarantee you a place in a DPP *Higher Nitec* course.)

If you have offered GCE O-Level examination subjects in 2023, you may refer to this table for the equivalent grade to compute your ELMAB3 aggregate:

GCE O-Level Grade	Converted Grade
A1-B3	1
B4-C6	2
D7	3
E8	4

3. How do I apply?

- Upon release of the GCE N-Level results, all DPP-eligible students may apply for DPP *Higher Nitec* courses via the ITE website (<https://www.ite.edu.sg>).
- You may select up to 12 course choices.
- Remember to provide updated contact details in your application so that ITE can contact you if necessary.

4. How will I be informed of the outcome?

- You should check your DPP posting results online on the morning of the release of the DPP posting results.
- You will then have to indicate if you wish to accept/reject/appeal the offer.
- Your offer will be void if you do not accept the offer by the stipulated date. You will be required to continue with your classes in Sec 5 or with your *Nitec* course if your application via JIE 'N' is successful

5. What happens next?

Upon accepting your DPP offer, you will attend a 10-week DPP preparatory programme starting from Jan 2024.

Release of GCE N-Level Results	DPP Application	Application Processing	Release of DPP Posting Results	Accept/Reject/Appeal	Release of GCE O-Level Results	DPP Application for newly-eligible students	Application Processing	Release of DPP Posting Results	End of DPP Admissions Exercise
--------------------------------	-----------------	------------------------	--------------------------------	----------------------	--------------------------------	---	------------------------	--------------------------------	--------------------------------

December 2023

January 2024

Early February 2024

Details of Admission Exercises (PFP)

PFP – Polytechnic Foundation Programme

PFP is a one-year programme that offers a practice-oriented curriculum taught by polytechnic lecturers to better prepare polytechnic-bound Secondary 4 N(A) students for entry into selected polytechnic diploma courses. PFP students are given provisional places in diploma programmes, subject to them passing all modules in the one-year programme.



go.gov.sg/pfp

- ❑ Students who are eligible for and intend to apply for PFP **should apply and accept DPP/ JIE N while waiting for O level results.**
- ❑ Being eligible for PFP **does not guarantee placement** into a PFP course. Placement in PFP is **subject to the availability of vacancies** and in open competition with other eligible applicants based on merit.
- ❑ Upon release of the **GCE O-Level results in Jan 2024**,
 - School will contact them to collect the PFP eligibility form (Form P) if they are eligible for PFP after the release of the GCE O-Level results.
 - Students who decide to apply for & accept PFP offer in January will need to withdraw from the DPP course. Applicants can apply for a refund of their DPP enrolment fees, subject to ITE's approval.

Details of Admission Exercises (PFP)

PFP – Polytechnic Foundation Programme

PFP is a one-year programme that offers a practice-oriented curriculum taught by polytechnic lecturers to better prepare polytechnic-bound Secondary 4 N(A) students for entry into selected polytechnic diploma courses. PFP students are given provisional places in diploma programmes, subject to them passing all modules in the one-year programme.



go.gov.sg/pfp

For Courses featured in Group 1	Minimum Required Grades
English Language Syllabus A	3
Mathematics Syllabus A / Additional Mathematics	3
One of the following relevant subjects: - Design and Technology - Food and Nutrition / Nutrition and Food Science - Science (Chemistry, Biology) - Science (Physics, Biology) - Science (Physics, Chemistry)	3
Any two other subjects excluding CCA	4
For Courses featured in Group 2	Minimum Required Grades
English Language Syllabus A	2
Mathematics Syllabus A / Additional Mathematics	3
One of the following relevant subjects: - Art - Geography - History - Humanities (Social Studies, Geography) - Humanities (Social Studies, History) - Humanities (Social Studies, Literature in English) - Literature in English - Principles of Accounts	3
Any two other subjects excluding CCA	4

POLYTECHNIC FOUNDATION PROGRAMME (PFP)

Essential Things You Need to Know

1. What is the PFP?

- A foundation year at the polytechnics that:
 - Prepares well-performing Sec 4N(A) students for entry into relevant polytechnic diploma courses
 - Serves as an alternative to Sec 5
- Conducted over two academic semesters at the polytechnics
- Students must pass all PFP modules in order to progress to their respective, pre-selected diploma courses.

2. Am I Eligible for PFP 2024?

You are eligible for the PFP if you:

- Sat for GCE N-Level exams as a school candidate in 2023
- Have obtained an ELMAB3 aggregate of 12 points or less (before deduction of CCA bonus points)
- Met subject-specific entry requirements as listed on the PFP portal



If you can check all 3 boxes above, you're eligible!

(Note: Eligibility does not guarantee you a place in a PFP course)

If you had offered GCE O-Level examination subjects in 2023, you may refer to this table for the equivalent grade to compute your ELMAB3 aggregate:

GCE 'O' Level Grade	Converted Grade
A1-B3	1
B4-C6	2
D7	3
E8	4

3. How do I Apply?

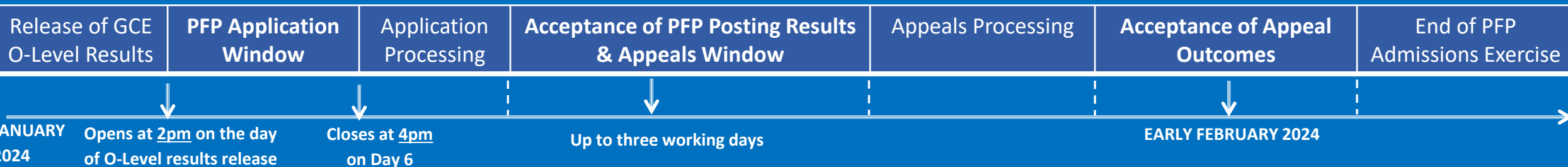
- Upon release of the GCE O-Level results, all PFP-eligible students will receive Form P containing a PFP PIN that allows them to apply for the PFP at this [link](#).
- You may select up to five course choices.
- Remember to provide updated contact details in your application to allow the polytechnics to contact you if necessary.
(Note: You should continue to attend Sec 5 from 2 January 2024 while applying for PFP.)

4. How Will I be Informed of the Outcome?

- You should log in to the PFP portal to check your application outcomes on the day of PFP posting results release.
- You will then have to indicate if you wish to accept/reject/appeal the offer.
- If you do not select any option, your offer will become invalid and you will be required to continue with your classes in Sec 5/DPP.
(Note: If your appeal is successful, your original offer will be voided, regardless of whether you accept the new PFP offer.)

5. What Happens Next?

- If you accept your offer, you will receive an enrolment package from the polytechnics in February/March 2024.
- The PFP year will start in April 2024.



Details of Admission Exercises (NFP)

NFP – NAFA Foundation Programme

The NFP is a one-year practice-based programme that prepares N(A) – Level holders to pursue a diploma in creative arts. NFP students who successfully complete the programme will be offered a place in their chosen diploma course at NAFA.



go.gov.sg/nafa-applynow

Minimum Eligibility Criteria for DPP/ITE/Sec 5N(A)/PFP

Direct-Entry-Scheme to Polytechnic Programme (DPP) [N(A)]	ITE (JIE 'N' / JIE 'E') [N(A) / N(T)]	Sec 5N(A) [N(A)]	Polytechnic Foundation Programme (PFP) [N(A)]
<ol style="list-style-type: none"> ELMAB3 \leq 19 (exclude CCA bonus points) Met course-specific entry requirements 'O' Level subjects may be used for computation 	<p>Must fulfill minimum entry requirements of the intended course</p>	<ol style="list-style-type: none"> ELMAB3 \leq 19 (exclude CCA bonus points) At least Grade 5 for <u>all</u> subjects used in computation of ELMAB3 	<ol style="list-style-type: none"> ELMAB3 \leq 12 (exclude CCA bonus points) Met subject-specific entry requirements as listed on the PFP portal 'O' Level subjects maybe used for computation
<ul style="list-style-type: none"> Apply from 2.30pm today to 5pm on 21 Dec 2023. 	<ul style="list-style-type: none"> Apply from 2.30pm today to 5pm on 21 Dec 2023. 	<ul style="list-style-type: none"> Must be committed to pursue 'O' Level education Report to school on 2 Jan 2024 	<ul style="list-style-type: none"> Submit online application after release of GCE 'O' Level result in 2024 Report to school on 2 Jan 2024

ACCEPT offer before Appeal!

Key Dates for Jan 2023 Intake Exercise

IMPORTANT DATES FOR INTAKE ACTIVITIES

Please note the following important dates:

Joint Intake Exercise 'N' (JIE 'N') for 3-Year Higher Nitec / 2-Year Nitec Courses and Joint Intake Exercise 'E' (JIE 'E') for 4-year Higher Nitec course with Enhanced Foundation Programme and 3-Year Nitec Courses with Enhanced Nitec Foundation Programme

Activity	Date (Tentative)
Application Period	The application will commence following the official announcement of the 2023 Singapore-Cambridge GCE 'N' (Technical) and GCE 'N' (Academic) Level Examination results. The application period will start from 2.30pm on the 1 st day of application and end at 5pm on 21 Dec 2023. The exact application period will be published on the ITE website following the release of the GCE 'N' Level Examination results.
Release of Course Interview Details	22 Dec 2023 (from 2pm) - (Please refer to page 28)
Interview for Courses with Interview Requirement	26 Dec 2023 or 27 Dec 2023
Release of Application Results	29 Dec 2023 (from 9am)
Acceptance of Offer	29 Dec 2023 to 3 Jan 2024
Reporting to Colleges and Commencement of Training	8 Jan 2024
Appeal	29 Dec 2023 to 3 Jan 2024
Release of Course Interview Details under Appeal Phase	5 Jan 2024 (from 9am)
Interview for Courses with Interview Requirement under Appeal Phase	8 Jan 2024
Release of Appeal Results	10 Jan 2024 (from 9am)

Joint Intake Exercise 'H' (JIE 'H') for 2-Year Higher Nitec with 10 Weeks Preparatory Courses under Direct Entry Scheme to Polytechnic Programme (DPP)

Activity	Date (Tentative)
Application Period	The application will commence following the official announcement of the 2023 Singapore-Cambridge GCE 'N' (Academic) Level Examination results. The application period will start from 2.30pm on the 1 st day of application and end at 5pm on 21 Dec 2023. The exact application period will be published on the ITE website following the release of the GCE 'N' (Academic) Level Examination results.
Release of Application Results	22 Dec 2023 (from 2pm)
Acceptance of Offer	22 Dec 2023 to 27 Dec 2023
Appeal	22 Dec 2023 to 27 Dec 2023
Release of Appeal Results	29 Dec 2023 (from 9am)
Reporting to Colleges and Commencement of Training	8 Jan 2024

Traineeship

Activity	Date (Tentative)
Application Period	The application will start from 2.30pm on the day of release of the 2023 Singapore-Cambridge GCE 'N' Level Examination results and end at 5pm on 31 December 2023. Please refer to the ITE website following the release of the 2023 GCE 'N' Level Examination results for the exact application period and more details on the intake. Applicants will have to attend an interview with the sponsoring company if they are shortlisted and will only be enrolled into the Traineeship programme upon acceptance and employment by the sponsoring company.

Note: All the above dates and schedules are tentative. Please refer to the latest changes (if any) on the ITE website following the release of the 2023 GCE 'N' Level Examination results.

Refer to Pg 6 of **2024**
INTAKE EXERCISE BOOKLET
(<https://www.ite.edu.sg/docs/default-source/admissions-docs/full-time/publications/admission-booklet/gce-n-admission-booklet-2024.pdf>).

For instructions on Application; Checking of Course Interview; Acceptance of Offer; Appeal, refer to the following pages.
(**Register with your personal email**):

Key Dates for Jan 2024 Intake Exercise (Full-time Nitec Courses)

Key Activity	Period for 2-Year and 3-Year Nitec Courses, and 3-Year Higher Nitec courses	Remarks
<u>1st Phase (Main Phase)</u>		
Application	18 Dec 2023 (2.30pm) to 21 Dec 2023 (5pm)	Apply through the Internet at https://www.ite.edu.sg with NRIC / FIN and Date of Birth. You may also apply using SingPass.
Release of Results	29 Dec 2023 at 9am	Check results at https://istudent.ite.edu.sg with web ID and password
Acceptance of Course Offer Period	29 Dec 2023 to 3 Jan 2024	Accept course offer at https://istudent.ite.edu.sg with web ID and password
<u>2nd Phase (Late Application/Appeal Phase)</u>		
Application	29 Dec 2023 to 3 Jan 2024	Apply through the Internet at https://istudent.ite.edu.sg with NRIC / FIN and Date of Birth. You may also apply using SingPass.
Release of Results	10 Jan 2024 at 9am	Check results at https://istudent.ite.edu.sg with web ID and password
Acceptance of Course Offer Period	10 Jan 2024 to 12 Jan 2024	Accept course offer at https://istudent.ite.edu.sg with web ID and password
<u>3rd Phase (Final Top-up Phase)</u>		
Application	1 st Top-up Phase Application - 10 Jan to 18 Jan 2024 2 nd Top-up Phase Application - 24 Jan to 7 Feb 2024	Apply through the Internet at https://istudent.ite.edu.sg with NRIC / FIN and Date of Birth. You may also apply using SingPass.
Release of Results	1 st Top-up Phase - 15 Jan to 24 Jan 2024 2 nd Top-up Phase - 24 Jan to 14 Feb 2024	Check results at https://istudent.ite.edu.sg with web ID and password
Acceptance of Course Offer Period	1 st Top-up Phase - 15 Jan to 24 Jan 2024 2 nd Top-up Phase - 24 Jan to 14 Feb 2024	Accept course offer at https://istudent.ite.edu.sg with web ID and password

Jan 2023 Intake Term Commencement Date: 8 Jan 2024

Joint Intake Exercise (JIE)

- ❑ All N(A)* /N(T) school leavers are encouraged to put in an application during the **1st Phase (Main Phase)** between **18 Dec 2023 (2.30pm) to 21 Dec 2023 (5pm)**. Application results for the 1st Phase will be released on **29 Dec 2023 at 9am**.
 - ❑ **Interview** (only for selected courses) on **Tue 26 Dec 2023 and Wed 27 Dec 2023**. Applicants can log in on **Fri 22 Dec 2023 (2pm)** to check the interview details.
- ❑ If you wish to appeal, please accept the course offered before applying in the **2nd Phase (Late Application/Appeal Phase)** between **29 Dec 2023 to 3 Jan 2024**. The application results for the 2nd Phase will be known on **10 Jan 2024 at 9am**.
- ❑ Unsuccessful applicants can appeal under the **3rd Phase (Final Top-up Phase)** between **10 Jan to 18 Jan 2024 and 24 Jan to 7 Feb 2024** for courses with vacancies. The application results for the 3rd Phase will be known between **15 Jan to 24 Jan 2024** and **24 Jan to 14 Feb 2024**.

*N(A) students progressing to ITE

For further enquiries, N-Level school leavers can contact
ITE Hotline: 1800-2222-111

Key Pointers for Students on ITE's Joint Intake Exercise (JIE) for Admission to Nitec Courses

ALL N(T) students and N(A) students (who are not progressing to 5N(A) or repeating 4N(A)) are eligible for JIE.

Keen competition for Nitec and Higher Nitec courses, so use all 12 choices wisely!

Participation in Main Phase is key to secure a place in ITE!

If you are keen in the work & learn option, you may consider applying for the ITE Traineeship programme. Do apply in the Main Phase to avoid missing a place in ITE!

If you are unsuccessful in EAE, make sure you apply in Main Phase to avoid missing a place!

If you have received an additional letter, then you are eligible for the 3-year Enhanced Foundation Programme (EFP).

If you are eligible for EFP, make sure you apply for the 2-year Nitec and 3-year Higher Nitec first before applying for EFP!

The EFP helps to build the necessary literacy and numeracy foundations that will enable you to successfully complete your Nitec course!

If you are counter-offered a course, accept it first before appealing for another course you may be more interested in!


Online Application for


2-Year Nitec and 3-Year Higher Nitec Courses

3-Year Nitec/4-year Higher Nitec Course with EFP
(for N(T) courses with 0, 1 pass)

1. Go to <https://www.ite.edu.sg>.

2. Click  icon.

3. Under JIE 'N', click  icon to link to the application website

Under JIE 'E', click  icon to link to the application website

. At the application website:

- Enter NRIC / FIN and Date of Birth to start application. You may also apply using SingPass.
- Upon completion of application, applicants will receive their **web ID and password**.

Checking of Posting Results/Accept Course Offer

2-Year Nitec and 3-Year Higher Nitec Courses

3-Year Nitec/4-year Higher Nitec Course with EFP
(for N(T) courses with 0, 1 pass)

1. Go to <https://istudent.ite.edu.sg>.
2. Enter **web ID and password**.
3. Click '**Self-Service**' followed by '**Student Admission**' followed by '**View Application Results**' to view the application results and to accept course offer.

The above steps applies to all phases (refer to Slide 32 for dates).
For more details, please refer to ITE Admission Booklet.

Joint Intake Exercise (JIE)

Scenarios	Reason for contact by teachers/ MOE
<i>If you did not apply</i>	to understand your reasons and, where necessary, assist you to complete the ITE application online in the Appeal and Top-Up Phases.
<i>If you applied but had counter offers</i>	to advise/remind you to accept the counter-offer <u>before</u> submitting an appeal.
<i>If you are not enrolled in any course in secondary school or Post-Secondary Ed Institutions (i.e. Poly/ ITE/ NAFA/ LaSalle) by May 2023</i>	For further support and guidance

Additional Information For Students


Should you require further advice or assistance in your applications or future plans, please contact your teachers and ECG Counsellor.

For further inquiries, you may refer to the following hotlines and links for more information and advice on further education:

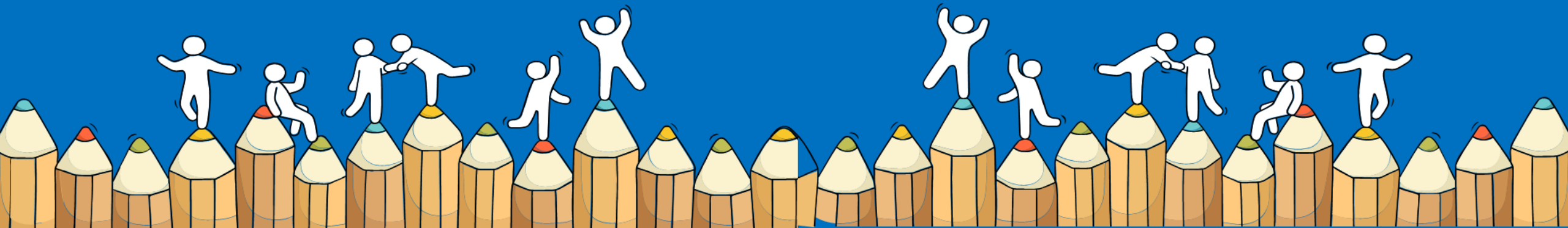
Institute of Technical Education (ITE)	
ITE Hotline (for ITE admissions and courses)	1800 2222 111 training@ite.edu.sg
Education and Career Guidance (ECG)	
ECG Centre @ MOE	<u>6831 1420</u> MOE ECG@moe.gov.sg e-Appointment: https://go.gov.sg/moe-ecg-centre

Additional Information For Students

The information listed in the table below will help you to make an informed decision on which choice of courses you could consider applying at ITE.

S/N	Information	Attachment/Link
1	ITE Factsheet 2023	 JIEN2023 Factsheet
2	ITE Course Booklet 2024	https://for.edu.sg/ite-course-booklet-2024
3	ITE Traineeship Courses	https://www.ite.edu.sg/courses/traineeship-courses.
4	Information on Progression Opportunities (From <i>Nitec</i> Courses to <i>Higher Nitec</i> and Technical Diploma Courses)	https://www.ite.edu.sg/admissions/full-time-courses/nitec/progression-opportunities
5	Information on Graduate Employment Survey	https://www.ite.edu.sg/admissions/graduate-employment-survey

For Students Planning for Private Education



The 3Rs when deciding on Private Education

Reasons

- Why are you furthering your studies?
- Is this for better job prospects?

Readiness

- How ready are you to further your studies?
- Can you cope with the academic rigour and assignment deadlines?
- Can you fund your studies?

Risks

- Do you know the possible drawbacks?
- Your expected returns may not exceed the investments you put into your private education.
- Private schools may make exaggerated claims.
- Private schools may close due to various reasons.
- You may not get a full refund if you withdraw from your course.



8 Things You Should Know Before You Enrol in A Private School

School Registration



Ensure the school is registered with CPE. Review the school's registration period, expiry date and its overall registration track record.

Partner Institution



Research on the partner institution conferring the diploma or degree, and whether the qualification is recognised by the industry.

EduTrust Certification Scheme

Is the school EduTrust-certified*? Under the scheme, private schools are assessed for their performance in areas such as school management and provision of student support services.



**Schools are required to obtain EduTrust certification in order to offer external degree programmes*

School Premises

Head down to the campus ground to check the facilities and support services. Observe the study environment too.



Fee Protection



Ask if there is any course fee protection so that you will be able to recover unconsumed course fees should the school close down.

Beyond Course fees



Find out about the course syllabus and materials, graduation rates and employment prospects. Approach the alumni to find out what they think of the school.

Teachers

Check if the teachers are qualified to teach the course.



Internship

If industry attachment is included, find out which organisation you will be attached to, the period of attachment and the alternative arrangement should the attachment become unavailable. Verify the information with the organisation as well.



What's NEXT?

After Receiving N-LEVEL Results



How to check your progression status?

Under “Remarks” on your result slip/certificate

- “Promoted”** means you are eligible for Sec 5N(A)
 - Offer for DPP is reflected in Form N
 - Offer for PFP only in Jan 2024
 - You are eligible to apply for ITE Nitec/Higher Nitec courses

- “Repeat”** means
 - You are eligible to repeat Sec 4N(A) or
 - You are eligible to apply for ITE Nitec courses (recommended)

- “ITE”** means
 - You are eligible to apply for ITE Nitec courses



Registration Support in School

Venue: Computer Lab 3

Date	Time
19 Dec 2023 (Tue)	9.30am to 12.00pm 2.30pm to 4.00pm
20 Dec 2023 (Wed)	9.30am to 12.00pm 2.30pm to 4.00pm

Please seek assistance from

- Desktop Engineer if you encounter technical problems.
- Year Head if you need help with the registration process.



Summary of Important Dates

Admission Exercise	Application Dates	Date of Posting Result	Period for Acceptance/ Rejection of Offer	Appeal Phase	Release of Appeal Results
DPP	Start: 18 Dec 2023, 2.30pm	22 Dec 2023, 2pm	22 Dec 2023 to 27 Dec 2023	22 Dec 2023 to 27 Dec 2023	10 Jan 2024, 9am
JIE (Main Phase)	End: 21 Dec 2023, 5pm	29 Dec 2023, 9am	29 Dec 2023 to 3 Jan 2023	29 Dec 2023 to 3 Jan 2023	29 Dec 2023, 9am

ACCEPT offer before appealing!

Deadline for Sec 5N(A) form: 22 Dec 2023 (Friday), 5pm



Items List

Check that you have received the following:

- Result slip
- Form N
- Examination Certificate*
- 2024 Intake Exercise Admission Booklet
- ECG materials
- Tote bag



Other Administrative Matters

1. Check accuracy of your personal information on your result slip & certificate.
2. All ICON Email accounts will be removed by end of year. **Update your contact number (HP)** with your class mentors.

S/N	Scenario	Instructions
1	Appeal for review of results	<ul style="list-style-type: none">• Please report to General Office today 3pm to see school leaders.
2	Intention to move to 5N(A)	<ul style="list-style-type: none">• Submit form (Annex D) to General Office to inform school of intention by 22 Dec 2023, 5pm• ECGC will contact them to have a conversation.• Apply for post- sec options while applying for 5N(A).• SL & YH will meet the students and parents together from 27 Dec.
3	Intention to repeat (must meet retention criteria of	<ul style="list-style-type: none">• Inform YH, Ms Nora to share intention• ECGC will contact them to have a conversation.• Submit their application for JIE (main intake).• Jan 2024: Meeting with SLs after posting results are out (typically 29/30 Dec)



ACCEPT offer before Appeal!

Key Messages

- **Apply for one or more application** this December if you qualify.
- For students who intend to apply for PFP, Sec 5 or repeat 4N, they **must apply for available post-sec options concurrently**.
- **Accept all offers before** appeal/while waiting for other applications.
- Maximise **all** their choices.



Where to Access the Materials

The screenshot shows the Montfort Secondary School website. At the top, there is a navigation bar with the school's logo and the following links: MONTFORT COMMUNITY, CO-CURRICULAR ACTIVITIES, CURRICULUM, QUICKLINKS, and ADMISSION. Below the navigation bar is a banner image featuring five cartoon characters representing different school activities: a student in a blue blazer, a student in a white shirt and tie, a student in a yellow sports jersey holding a baseball bat, a student in a white shirt holding a saxophone, and a student in a blue uniform with a red sash. Below the banner are three yellow buttons labeled "MONTFORT TIMES of Montfort Heartbeat", "ALP Applied Learning Programme", and "STUDENT ICON of Student Resources".

OUR LATEST NEWS

Announcements

Year	Announcement	Date
2023	Release of 2023 GCE N Level Results	25 NOV 2023
2023	2024 Sec 1 Registration and Onboarding	21 NOV 2023
2023	S1 to S3 End of Year Examination	12 SEP 2023

[VIEW MORE](#) →



The N-Level is not
the destination.

It is part of your
education journey.



All the Best!
Age Quod Agis

